

# Regional Futures CO-DESIGN WEEK

## Have your say and contribute to a better Redlands

We are thrilled to invite you to participate in this important co-design initiative to help address social isolation, better support marginalised groups and promote technology and economic diversification in Redland City.

Redlands community residents are invited to join our 4 co-design workshops to share their insights and shape the Regional Futures project. Your feedback is invaluable and essential in ensuring it meets community needs, creating real impact for Redlands Bay and local island residents.

Professor Sonja Pedell from Swinburne University Living Lab will facilitate these sessions. Participants will share experiences, brainstorm ideas, and shape the final design. Feedback will be used to refine outcomes, ensuring diverse perspectives are valued. Respectful communication is encouraged. Morning/Afternoon tea will be provided.

### What is Co-Design?

Co-design ensures services are shaped with, not for, communities. It values lived experience, fostering trust, collaboration, and inclusion. By listening and involving older people, carers, and communities from the start, co-design creates meaningful, responsive solutions that reflect real needs, strengthen connections, and empower individuals to have a genuine voice in decision-making.

### What is a Living Lab?

A Living Lab is a collaborative space where researchers, communities, governments, and industry co-create and test solutions in real-world settings. Focused on inclusivity and local impact, Swinburne's Living Lab enhances older adults' health and wellbeing through user-led innovation within a global and national network.

### Why does it matter?

Co-design ensures older people, carers, and communities actively shape services that impact their lives. By involving them from the start, outcomes are more meaningful, respectful, and aligned with real needs. It fosters trust, strengthens communication, and builds deeper connections, ensuring everyone feels seen, valued, and an integral part of the process.

### Co-Design Dates

#### Tuesday 17 June

Hub 68, 58-68 Delancey St, Ormiston	9:30am- 11:15 am
Macleay Island Progress Hall, 26-30 Russell Terrace, Macleay Island	2:00pm- 3:30pm

#### Wednesday 18 June

Lamb Island Residents Association Building, 125-133 Lucas Dr, Lamb Island	9:30am- 11:15 am
Russell Island RSL Sub Branch Inc, 9 Anzac Dr, Russell Island	2:00pm- 3:30pm

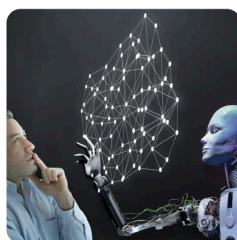
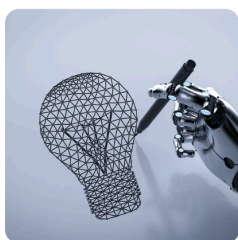
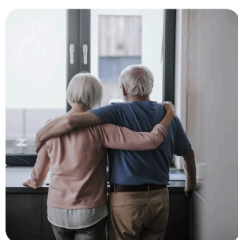
#### Project Partners

Global Community Resourcing | Regional Development Australia (RDA) Logan & Redlands | Community Care Smart Assistive Technology Collaborative | Hub68 | Micah Projects | National Aged & Community Care Roundtable for Forgotten Australians | Endeavour Foundation | Swinburne University

#### Registrations close Monday 16 June

If you can join us at one or more of these events, please register using the QR Code below, or at

<https://events.humanitix.com/regional-futures-co-design-activities>



Queensland  
Government

Proudly supported by the Advance Queensland initiative

For more information contact us at  
[RegionalFutures@communityresourcing.com.au](mailto:RegionalFutures@communityresourcing.com.au)  
0499 006 729